



3 SDMC



L90 / 60.000Hrs



0,64 Kg/m



BE_LINE Trapezium 4030



NOME / NAME

LIMIT4030 Apparecchio monoemissione per illuminazione lineare / Single emission fixture for linear lighting

DIMENSIONI / DIMENSION

LED TYPE:	White	White	White	White	DW	RGB+W
SUPPLY:	24Vdc	48Vdc	24Vdc	48Vdc	24Vdc	24Vdc
CRI:	CRI>90	CRI>90	Full Spectrum	Full Spectrum	CRI>90	CRI>90
	25mm	50mm	50mm	100mm	50mm	50mm
MIN. [mm]:	0045	0070	0070	0120	0070	0070
MAX. [mm]:	2995	2970	2970	2920	2970	2970

INSTALLAZIONE / INSTALLATION

20	Indoor IP20
67	Outdoor IP67

SCHERMO-OTTICA / COVER-OPTIC

OP	Opale / Opal	TR	Trasparente / Transparent *
BW	Nero / Black *	PZ	Prismatizzato / Prismatic *

(*) Solo per IP20 / IP20 only

FINITURA / FINISHING *

PI1	Vern. polvere Bianco RAL9010 Powder coating White RAL9010	PL1	Vern. polvere Nero RAL9005 Powder coating Black RAL9005	AG0	Anodizzato Grigio Anodized Grey
PC1	Vern. polvere Rosso Powder coating Red	PB1	Vern. polvere Arancio Powder coating Orange	PA4	Vern. polvere Giallo Powder coating Yellow
PE1	Vern. polvere Blu Powder coating Blue	PF1	Vern. polvere Verde Powder coating Green	PH1	Vern. polvere Marrone Powder coating Brown
BG0	Alluminio Brillantato Grigio Polished Grey Aluminum				

(*) Su richiesta sono disponibili ulteriori colori RAL / Additional RAL colour are available on demand

CARATTERISTICHE TECNICHE / TECHNICAL DATA

	Cod.	CV [Vdc]	W/m	Lm/m		Cod.	CCT	CRI
				CRI >90	Full Spectrum			
WHITE (1 CH)	W2412	24	12	1502	1502	279	2700 K	> 90
	W2418	24	18	2253	2253	309	3000 K	> 90
	W2424	24	24	3004	3004	359	3500 K	> 90
	W2430	24	30	3756	3756	409	4000 K	> 90
	W2440	24	40	5008	-	579	5700 K	> 90
	W4812	48	12	1502	1502	27H	2700 K	Full Spectrum
	W4818	48	18	2253	2253	30H	3000 K	Full Spectrum
	W4824	48	24	3004	3004	35H	3500 K	Full Spectrum
	W4830	48	30	3756	3756	40H	4000 K	Full Spectrum
	W4840	48	40	5008	-	50H	5000 K	Full Spectrum
	DW (2 CH)	D2412	24	12	1502		DA9	2700-4000K
D2418		24	18	2235		DB9	2700-5700K	> 90
D2424		24	24	3004				
D2430		24	30	3756				
RGB+W (4 CH)	X2412	24	12 + 12	1288		RA9	RGB+2700K	> 90
	X2418	24	18 + 18	1932		RB9	RGB+3000K	> 90
	X2424	24	24 + 24	2575				

Condizioni / Conditions: Flux BIN P10 - Ta: 25°C

ESEMPIO DI CODICE / EXAMPLE OF CODE

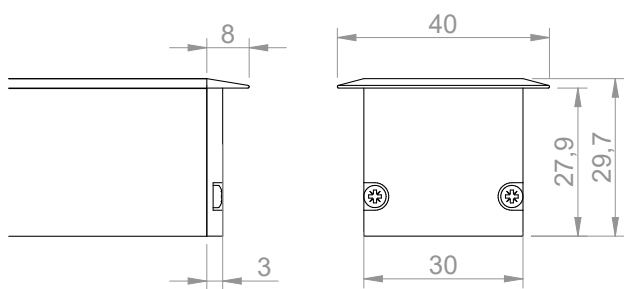
CODICE: **LIMT4030102020OPPI1W2440309**

DESCRIZIONE: **BE_LINE Trapezium 4030**

Apparecchio monoemissione per illuminazione lineare, sez. 40x30mm,
L:1020mm, IP20 Indoor, corpo estruso in alluminio, verniciato a polvere bianco
RAL9010 opaco, diffusore policarbonato V0 opaco
LED WHITE 40W/m, CV 24V, 3000K 3SDCM CRI>90, piattina doppio isolamento
da 1m (2x0,75mm²), Cl.III

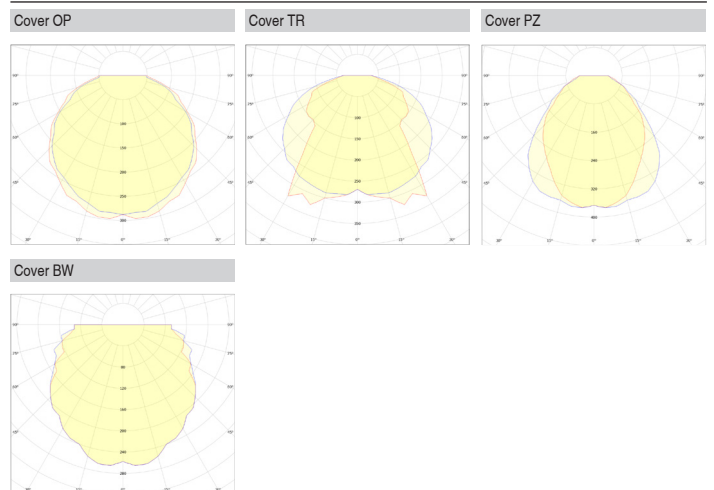


DISEGNO / DRAWING



Unita di misura: mm / Unit of Measurement: mm

GRAFICO POLARE / POLAR GRAPH



ACCESSORI / ACCESSORIES

INCASSO / RECESSED: Cod. **LIRS02**

