



3 SDMC



L90 / 60.000Hrs



1,62 Kg



## BE\_BRIGHT Circle Ø40



### NOME / NAME

**BMC00040**    Apparecchio monoemissione per illuminazione / Single emission fixture

### DIMENSIONI / DIMENSION

**025**    Ø400 x 25mm

### INSTALLAZIONE / INSTALLATION

**54**    Indoor IP54

**65**    Outdoor IP65

### SCHERMO-OTTICA / COVER-OPTIC

**OP**    Opale / Opal

### FINITURA / FINISHING \*

**PI1**

Vern. polvere Bianco RAL9010  
Powder coating White RAL9010

**VL1**

Vern. liquido Nero RAL9005  
Liquid paint Black RAL9005

(\*) Su richiesta sono disponibili ulteriori colori RAL / Additional RAL colour are available on demand

**CARATTERISTICHE TECNICHE / TECHNICAL DATA**

WHITE (1 CH)	Cod.	CV [Vdc]	W	Lm	Cod.	CCT	CRI
					CRI >90		
	<b>W48078</b>	48	77,8	8344	<b>279</b>	2700 K	> 90
					<b>309</b>	3000 K	> 90
					<b>359</b>	3500 K	> 90
					<b>409</b>	4000 K	> 90
					<b>579</b>	5700 K	> 90

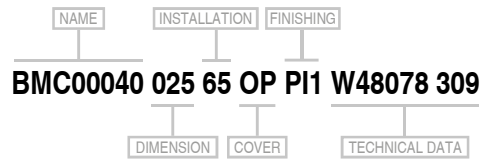
Condizioni / Conditions: Flux BIN P10 - Ta: 25°C

**ESEMPIO DI CODICE / EXAMPLE OF CODE**

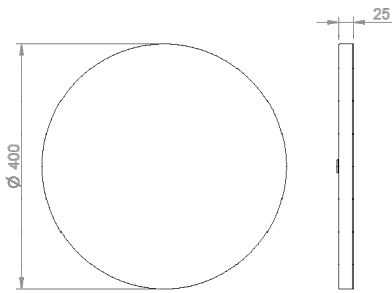
CODICE: **BMC0004002565OPPI1W48078309**

DESCRIZIONE: **BE\_BRIGHT Circle Ø40**

Apparecchio monoemissione per illuminazione, dimensioni Ø400x25mm,  
IP65 Outdoor, corpo in lamiera piegata, verniciato a polvere bianco RAL9010 opaco, diffusore  
in PMMA opale  
LED WHITE 77,8W, CV 48V, 3000K 3SDCM CRI>90, cavo nero da 3m (2x0,75mm<sup>2</sup>), Cl.III

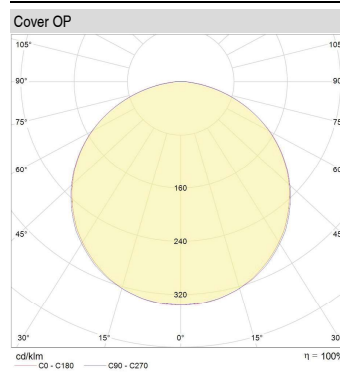


**DISEGNO / DRAWING**

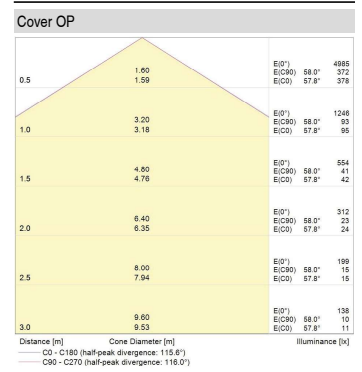


Unita di misura: mm / Unit of Measurement: mm

**GRAFICO POLARE / POLAR GRAPH**



**GRAFICO CONICO / CONICAL GRAPH**



**ACCESSORI / ACCESSORIES**

SOFFITTO / CEILING: 4pz. Cod. **ASM21013012**

PARETE / WALL: 4pz. Cod. **ASM21013012**

SOSPENSIONE / SUSPENSION: 2pz. Cod. **ASM21013010**

